

Interface Manual

Tilt Scout

SignalFire Model: Scout-TILT-3AABIS



The SignalFire Tilt Scout is an Intrinsically Safe wireless Inclinator used for Hatch, Pump Jack and Angle monitoring:

- Thief Hatch State reporting – Closed, Cracked, Open (Thief Hatch Mode).
- Pump Jack Status reporting - Running/Not Running (Pump Jack Mode)
- Angle reporting – X/Y Axis Tilt Angles (Angle Mode)
- Easy to install
- Internal long-life battery, 5+ years of operation
- Sends data to a SignalFire Gateway
- AES 128bit Encryption
- Pushbutton zeroing
- Report on state change

Specifications

2

Enclosure Size	3.5" wide × 3.1" tall × 2.3" deep
Power Source	Internal AA IS Lithium battery pack <i>SignalFire Part Number: 810-0031-01</i>
Temperature Rating	Operating range: -40°C to +80°C C1D1 certified ambient operating range: -40°C to +60°C
Radio	40mW, 902-928MHz Ism Band, FHSS radio, internal antenna
Compliance	Class I, Division 1 groups C and D. EXia = Intrinsically Safe Apparatus (Appareil à sécurité intrinsèque). Radio FCC and IC certified.
Standards	Intrinsically Safe Apparatus and Associated Apparatus for Use Hazardous (Classified) Locations Class I, Div 1 Groups C, D. T3 CEx ia Ga IIB T3 Conforms to UL 913:2013 Ed.8+R:10May2022 Certified to CSA C22.2#60079-0:2019 Ed.4 Certified to CSA C22.2#60079-11:2014 Ed.2 ETL25CA106219970X
Resolution	<0.1 degree
Reporting Frequency	Thief Hatch and Pump Jack Mode: Sends data every 10 minutes or immediately after a state change Angle Mode: User configurable 15 seconds to 2 hours



WARNING: Use of this equipment in a manner not specified by the manufacturer may impair the protection provided by the equipment.

3

AVERTISSEMENT: L'utilisation et l'implémentation de cet équipement d'une manière non spécifiée par le fabricant peut affecter son intégrité ainsi que sa protection.



WARNING: The use of any parts not supplied by the manufacturer violates the safety rating of the equipment.

AVERTISSEMENT: L'utilisation de composants ne provenant pas du fabricant compromet la sécurité et la certification du produit.



Radio LEDs

- The Radio TX LED (**green**) flashes each time a radio packet is sent. This LED will blink rapidly while searching for the radio network.
- The Radio RX LED (**red**) blinks on each received radio packet.

Status LEDs

- The Active LED (**green**) will blink at boot up and will blink quickly when the sensor is being read.
- The ERROR LED (**red**) will blink to indicate an error condition.

Zero Button

- The Zero button allows the sensor to be zeroed when the unit is installed, and the hatch is in the closed position. This is only used in Thief Hatch and Angle modes.

Check-in Button

- If this button is pressed the Tilt Scout will take a sensor reading and send the data to the gateway.

The Tilt Scout must be configured for correct operation before being fielded. The configurable items include:

- Tilt Scout Modes (Thief Hatch, Pump Jack, Angle)
- Modbus ID
- Network Selection

All settings are made using the SignalFire Toolkit PC application and SignalFire 4-pin USB cable (Serial-4PIN).

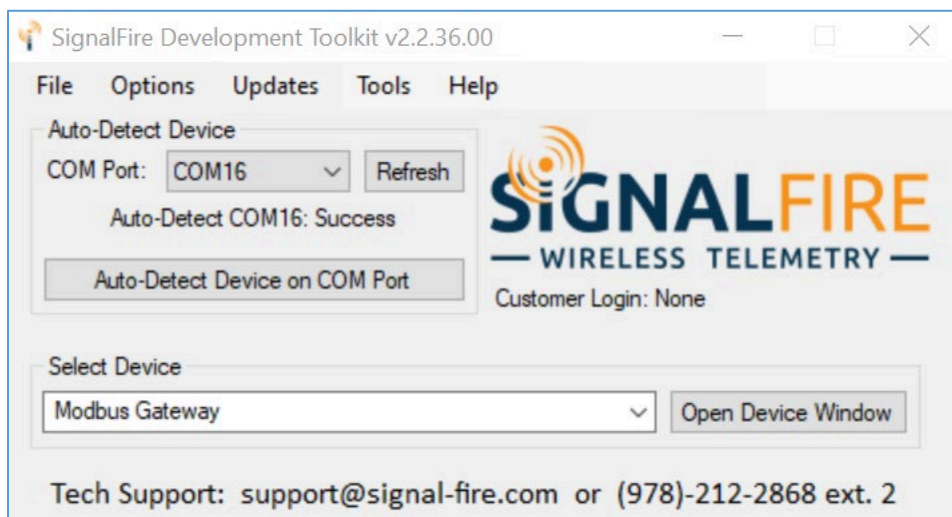


WARNING: Perform the steps in this section (Setup) in a safe location only.

AVERTISSEMENT: Les étapes de démarrage (setup) doivent être fait dans une zone sécuritaire.

Using the SignalFire Toolkit

The SignalFire Toolkit application can be downloaded at www.signal-fire.com/customer. After installation, launch the software and the main toolkit window will open:



Select the COM port associated with the Tilt Scout and click "Auto-Detect Device on COM Port." This will open the device configuration window, where all device settings can be configured.

Tilt Scout - Thief Hatch

File Settings Updates Tools Help

COM Port: COM16 Refresh

COM16 Open

Open Close Offline

Connect/Update

Product Thief Hatch

Modbus ID 17

Node Name MyThief17

Radio Connectivity Connected -73dBm

Mainboard Version 0.84.04

Radio Version 2.51 (sleeping)

Radio Address 50001

Corporate ID <Encrypted>

Radio Mode Sleeping

Radio Network 2

Radio Network Group 2

Radio Power (dBm) 14

Checkin Interval 60 minutes

Sample Interval (sec) 5

Unlatched Angle 1.50

Open Angle 34.50

Settings

Modbus ID 17 Set

Node Name MyThief17 Set

Radio Network 2 Set

Radio Network Group 2 Set

Set Encryption Help

☒ Enable Encryption

Key: nflation Set

Angle Mode Settings

Checkin Interval 1 minute Set

Sample Interval 0.1 seconds Set

Thief Mode Settings

Unlatched (Default: 1.5 deg) 1.50 Set

Open (Default: 15.0 deg) 34.50 Set

New Battery Life Estimate 5+ years

Reported Sensor Values

Address	Description	Value
3000	Hatch is Closed	0
3001	Hatch is Unlatched	0
3002	Hatch is Open	1
3003	Hatch Status	2 (Open)
3004	Open Status	80
3005	Low Battery	0
3006	Error Status	0
3007-3008	Angle (degrees)	37.763932
65523	Low Battery Alarm	0
65532	Battery Voltage (mV)	3072

Update Reported Sensor Values

Success

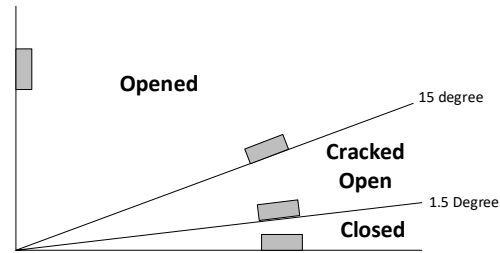
- ① COM Settings
- ② Node Information
- ③ Configurable node settings
- ④ Mode Specific Settings
- ⑤ Command successfully passed to node (displays fail if unsuccessful)
- ⑥ Current readings

Tilt Scout Modes

7

The default operation mode for the Tilt Scout is "Thief Hatch Mode". When the Tilt Scout is to be used for Pump Jack or Angle monitoring, the mode must be changed.

- Thief Hatch Mode: The device monitors the state of a hatch and reports it as closed, unlatched ([angle exceeds 1.5°](#)) or open ([angle exceeds 15°](#)).
- Pump Jack Mode: The device monitors the state of a pump jack and reports whether it is running or not.
- Angle Mode: The device reports the average, minimum and maximum X and Y axis angles over the reporting interval along with a data distinguishing sequence number.



From the 'Settings' menu, select 'Set Mode', then select either '[Thief Hatch](#)', 'Pump Jack Mode' or 'Angle Mode'. Note that the device Modbus register map changes with the configured mode setting.

Network Setting

The network is set using the SignalFire Toolkit. The network, network group, and corporate ID or encryption settings must match those of the gateway (and other nodes) for them to communicate.

Radio Network	1	Set
Radio Network Group	0	Set

Encryption

It is possible to encrypt over-the-air transmissions to prevent tampering. Encryption keys replace the Corporate ID system, so it is important that all devices connected to a Gateway have the same encryption key as well as network and network group number.

To set up a device to use encryption, click the checkbox labeled **Enable Encryption** inside the **Set Corporate ID** box:

Set Corporate ID

☐ Enable Encryption

Corporate ID: 7

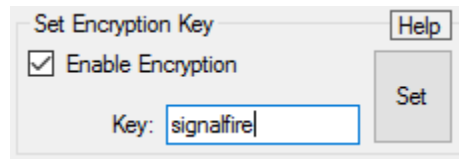
Help

Set

The encryption key box. For more details, click the Help button.

The box will then change into a **Set Encryption Key** box, and it will prompt instead for the encryption key you would like to use. Note that keys may not contain spaces or angle brackets. Enter it and then press **Set**. This will cause the Sentinel to drop its network, and only attempt to join networks that use the same encryption key. If you are setting up a new network, you will need to set the encryption key on all of your devices. If you are adding a Sentinel to a legacy network, you can

simply set the Corporate ID without clicking the Enable Encryption box, and it will remain compatible with the older system.

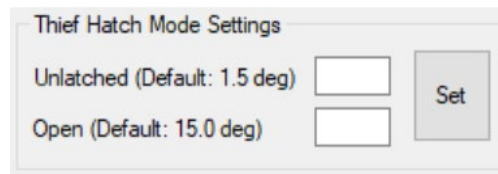


The 'Set Encryption Key' dialog box contains a 'Help' button in the top right corner. Below it is a checked checkbox labeled 'Enable Encryption'. At the bottom, there is a text input field labeled 'Key:' containing the text 'signalfire', and a 'Set' button to its right.

It is also possible to hide your encryption key, so it cannot be read. This is the most secure option, but if you forget your key, there is no way to recover it – you will have to reset the key on every device on its network. To enable this option, select **Set Encryption Key Unrecoverable** under the **Settings** menu.

Thief Hatch Mode Settings

The unlatched angle and open angle thresholds may be changed.

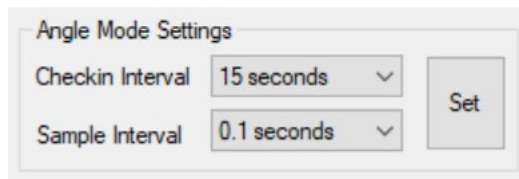


The 'Thief Hatch Mode Settings' dialog box has two input fields. The first is labeled 'Unlatched (Default: 1.5 deg)' and the second is labeled 'Open (Default: 15.0 deg)'. Both fields have empty text boxes next to them. A 'Set' button is located to the right of the 'Open' field.

Angle Mode Settings

The check-in interval sets the reporting frequency which is also the time period over which readings are averaged. The check-in interval defaults to 60 seconds. The available intervals are:

- 15 seconds
- 1 minute
- 2 minutes
- 5 minutes
- 10 minutes
- 30 minutes
- 60 minutes



The 'Angle Mode Settings' dialog box contains two dropdown menus. The first is labeled 'Checkin Interval' and is set to '15 seconds'. The second is labeled 'Sample Interval' and is set to '0.1 seconds'. A 'Set' button is located to the right of the 'Sample Interval' dropdown.

The sample interval sets the data rate at which readings are taken. The sample interval defaults to 0.1 seconds. The available intervals are:

- 0.1 seconds
- 0.2 seconds
- 0.5 seconds
- 1 second

The angle range is $\pm 90^\circ$ from the point at which the sensor was zeroed. If an out of range angle is detected, the error status is set. To indicate an error occurred in the reporting period, the device reports 360° as the average angle and 360° for the angle range that was exceeded (e.g., if there was a reading during the reporting period of 125° , both the average angle and the maximum angle will be set to 360°).

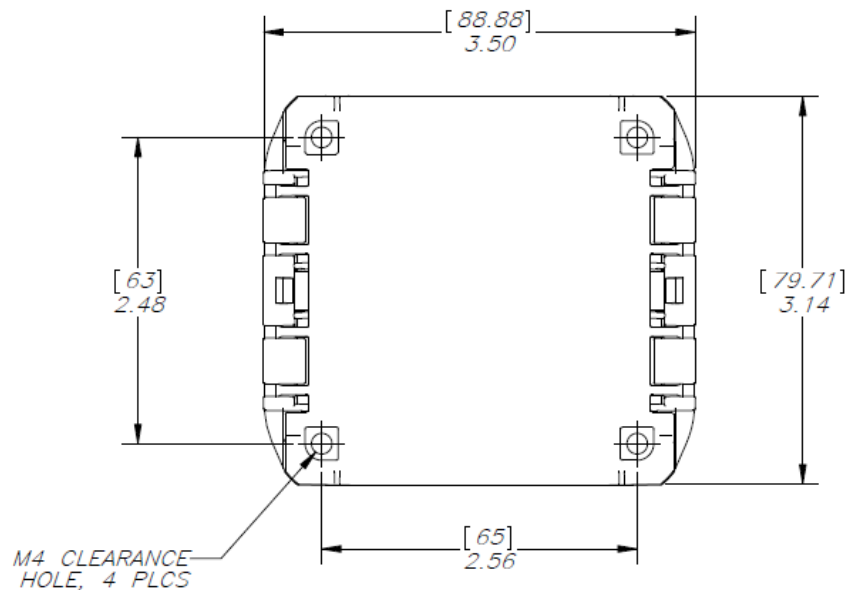
Mounting Requirements

9

Thief Hatch and Pump Jack Modes

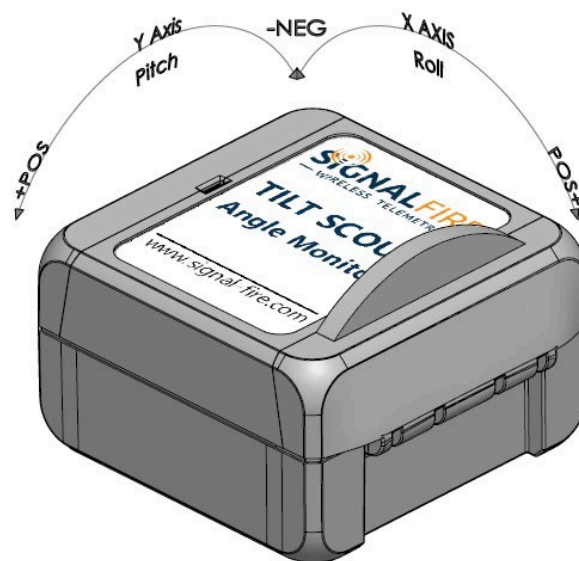
The sensor technology used does not require a specific orientation for installation, the device can be installed in any orientation or angle.

A suitable bracket must be used to adapt the Tilt Scout to a hatch cover or to the arm of a pump jack. The drawing below shows the dimension of the mounting holes available.



Angle Mode

The device must be mounted flat on a horizontal surface with the label facing up.



Note that the X and Y angles reported by the device are parallel to the X and Y axis of the enclosure.



WARNING: The Tilt Scout must be securely mounted such that it cannot sustain a fall. Failure to do this may impact the safety rating of the device

AVERTISSEMENT: Le Tilt Scout doit être solidement fixé de sorte qu'il ne puisse pas supporter une chute. Ne pas le faire peut affecter la cote de sécurité de l'appareil



WARNING: The Tilt Scout must be mounted in a location free of high vibrations. Over time vibrations can damage the Tilt Scout or battery pack, which could impair its safety ratings. Do not mount directly to continuous vibrating equipment such as pumps or compressors.

AVERTISSEMENT: Le Tilt Scout doit être monté dans un endroit sans vibrations élevées. Au fil du temps, les vibrations peuvent endommager le Flux Totalizer ou la batterie, ce qui pourrait nuire à ses cotes de sécurité. Ne pas monter directement sur des équipements vibrants continus tels que des pompes ou des compresseurs.

Sensor Zeroing – Thief Hatch and Angle Modes Only

Once the monitor has been secured, its angle sensor must be calibrated. In Thief Hatch mode, the hatch must be fully closed and latched before zeroing. Press and hold the ZERO button for about 2 seconds (until the green status LED turns on), then release. Wait approx. 5 seconds for the sensor to go through its internal calibration and zeroing process. If successful, the green status LED will blink 3 times. If the calibration fails (due to movement), the red status LED will blink 3 times, if this happens the zero process must be done again.

Remote Modbus Register Mapping

The Tilt Scout sends data to a SignalFire Telemetry Modbus Gateway, available at the gateway in registers where it can then be read by a Modbus RTU. This data is accessible at the same Modbus ID that was configured for the Tilt Scout.

Thief Hatch Mode

Register Number	Register Address (Offset)	Description
43001	3000	Hatch Closed State. 1=Closed, 0=Not closed
43002	3001	Hatch Unlatched State. 1=Unlatched, 0=Not unlatched
43003	3002	Hatch Open State. 1=Open, 0=Not Open
43004	3003	Hatch State. 0=Closed, 1=Unlatched, 2=Open
43005	3004	Hatch Open Count. Total number of hatch openings
43006	3005	Low Battery Alarm. 1=Low battery
43007	3006	Error Status. 0=no errors, 1=sensor error
43008-43009	3007-3008	Measured Angle (32Bit Float)

Pump Jack Mode

Register Number	Register Address (Offset)	Description
43001	3000	Pump Jack Status. 1=Running, 0=Not Running
43002	3001	Error Status. 0=no errors, 1=sensor error

Angle Mode

Register Number	Register Address (Offset)	Description
43001	3000-3001	X-Axis Angle Avg
43003	3002-3003	X-Axis Angle Min
43005	3004-3005	X-Axis Angle Max
43007	3006-3007	Y-Axis Angle Avg
43009	3008-3009	Y-Axis Angle Min
43011	3010-3011	Y-Axis Angle Max
43013	3012	Sequence Number (0 to 65,535)
43014	3013	Error Status (0=No Error, 2=Zeroing Error, 4=X Angle Error, 8=Y Angle Error, 12=X and Y Angle Errors)

Common Registers (Available in all modes)

Register Number	Register Address (Offset)	Description
49987	9986 or 65523	Low Battery Alarm. 1=Low battery
49988	9987 or 65524	Major revision number for the mainboard
49989	9988 or 65525	Minor revision number for the mainboard
49990	9989 or 65526	Major revision number for the radio
49991	9990 or 65527	Minor revision number for the radio
49992	9991 or 65528	High 16 bits of SFTS node address
49993	9992 or 65529	Low 16 bits of SFTS node address (the radio ID)
49994	9993 or 65530	Modbus ID readback
49995	9994 or 65531	Received signal strength of last packet from the device (Signed INT)
49996	9995 or 65532	Battery voltage of the device, in millivolts
49997	9996 or 65533	Minutes until this device will time out, unless new data is received
49998	9997 or 65534	Number of registers cached for this device
49999	9998 or 65535	Device type. 57=Thief Hatch Mode, 61=Pump Jack Mode, 67=Angle Mode

Internal Lithium Battery Replacement

Battery Packs can be changed with the node in place.

- 1 Open the cover from the enclosure.
- 2 Switch the power switch to the OFF position
- 3 Remove the two screws that hold the PCB in place
- 4 Unplug the battery from the PCB, by depressing the locking clip on the connector.
- 5 Install new battery pack
- 6 Connect the battery to the PCB battery connector.
- 7 Reinstall the PCB assembly



WARNING: Use of any battery other than the SignalFire part number 810-0031-01 will impair the protection provided by the equipment.

AVERTISSEMENT: La sécurité intrinsèque et la protection du produit seront compromis par l'utilisation de batteries autres que celle fournie par SignalFire ayant comme numéro de pièce 810-0031-01.

Cleaning Instructions

The outside of the enclosure may be cleaned with water, mild soap, and a damp cloth as needed. High pressure washing is not recommended.

13



WARNING: Electrostatic Discharge Hazard! Care must be taken to avoid the potential of creating a charge on the enclosure or antenna. Do not wipe with a dry cloth. Do not brush against the enclosure with clothing or gloves.

AVERTISSEMENT: Danger de décharges électrostatiques! Utilisez les précautions nécessaires pour éviter l'accumulation d'électricité statique sur l'antenne. Ne pas nettoyer l'antenne avec un linge sec. Ne pas frotter le boîtier avec des vêtements ou des gants.

Configuration / Debug

Debug and configuration information is available if a connection is made via the debug port on the main board. USB to 4-pin serial cable must be used for this interface.



WARNING: Only connect to the debug port in a safe area! Ensure that the maximum voltage applied to the configuration port is less than 5 VDC!

AVERTISSEMENT: Branchez le port de débogage que dans une zone secure.

Assurez-vous que la tension électrique sur le port de configuration soit moins de 5 volt DC.

Technical Support and Contact Information

SignalFire Telemetry
140 Lock Dr., Suite B
Marlborough, MA 01752
(978) 212-2868
support@signal-fire.com

Revision History

Revision	Date	Changes/Updates
1.0	5/17/17	Initial release
1.1	1/3/18	Updates for latest hardware revision
1.2	1/13/18	Updated for Tilt Scout Name. Added Pump Jack Mode
1.3	2/1/18	Updated mounting requirements, updated certification details
1.4	3/14/18	Added certification details
1.5	10/2/19	Added angle mode.
1.6	10/24/22	Added Thief Hatch mode settings. Updated Modbus terminology.
1.7	8/7/2025	Updated certification

APPENDIX - FCC and IC Statements

Changes or modifications not expressly approved by SignalFire Telemetry, Inc could void the user's authority to operate the equipment.

This device complies with Part 15 of the FCC Rules. Operation is subject to the following two conditions:

(1) this device may not cause harmful interference, and (2) this device must accept any interference received, including interference that may cause undesired operation.

This equipment has been tested and found to comply with the limits for a Class B digital device, pursuant to Part 15 of the FCC Rules. These limits are designed to provide reasonable protection against harmful interference in a residential installation. This equipment generates, uses and can radiate radio frequency energy and, if not installed and used in accordance with the instructions, may cause harmful interference to radio communications. However, there is no guarantee that interference will not occur in a particular installation. If this equipment does cause harmful interference to radio or television reception, which can be determined by turning the equipment off and on, the user is encouraged to try to correct the interference by one of the following measures:

- Reorient or relocate the receiving antenna.
- Increase the separation between the equipment and receiver.
- Connect the equipment into an outlet on a circuit different from that to which the receiver is connected.
- Consult the dealer or an experienced radio/TV technician for help.

This device has been designed to operate with the permanently soldered antenna. No other antenna may be used.

To comply with FCC's and IC's RF radiation exposure requirements, the antenna(s) used for this transmitter must be installed such that a minimum separation distance of 20cm is maintained between the radiator (antenna) & user's/nearby person's body at all times and must not be co-located or operating in conjunction with any other antenna or transmitter.

This device complies with Industry Canada's license-exempt RSSs. Operation is subject to the following two conditions: (1) This device may not cause interference; and (2) This device must accept any interference, including interference that may cause undesired operation of the device.

Le présent appareil est conforme aux CNR d'Industrie Canada applicables aux appareils radio exempts de licence. L'exploitation est autorisée aux deux conditions suivantes : (1) l'appareil ne doit pas produire de brouillage, et (2) l'appareil doit accepter tout brouillage radioélectrique subi, même si le brouillage est susceptible d'en compromettre le fonctionnement.