

# Interface Manual

## A2 HART

*SignalFire Model: A2-HART-XXXX*



The SignalFire A2-HART Node has the following features:

- HART communication loop. Supports up to 4 HART devices, reads up to 4 process variables from each connected HART device.
- Provides 18VDC to HART communication loop.
- One counter/frequency inputs, up to 2kHz. Open drain or pulse input supported
- Reports state of dry contact inputs, open/closed.
- One 32Bit count totalizer
- Low power operation from a 3 "D" cell lithium battery pack or A2-HCSolar system (external power from 3.5 to 5.0VDC may be used in place of the battery)
- Sends data to a SignalFire Buffered Modbus Gateway
- AES128bit Encryption

## Specifications

2

Enclosure Size	7.0" tall × 4.25" wide × 3.0" deep (not including attached antenna)
Power Sources	<p>Internal Lithium battery pack <i>SignalFire Part Number: A2-HART-3XD</i></p> <p>Solar battery system <i>SignalFire Part Number: A2-HART-HCSolar</i></p> <p><i>DC Powered (10-30V) adapter: A2-HARTs-DCDC</i></p>
Temperature Rating	-40°C to +80°C
Radio Frequency	902-928MHz ISM Band, FHSS radio, internal antenna
FCC Compliant Radio	<p>FDD ID: W8V-SFTS500 IC: 8373A-SFTS500</p>
Compliance	<p>Class 1, Division 2 Groups A,B,C,D T4</p> <p>Conforms to: UL 121201:2017 Ed.9+R:01Apr2021 UL 61010-1:2012 Ed.3+R:06Jun2023 UL 61010-2-201:2018 Ed.2+R:08Aug2022</p> <p>Certified to: CSA C22.2#213:2017 Ed.3+U1;U2;U3 CSA C22.2#61010-1-12:2012 Ed.3+U1;U2;A1;U3 CSA C22.2#61010-2-201:2018 Ed.2</p>

## Hazardous Location Certification

3

The A2 is rated Class 1 Division 2 non-incendive when powered by its internal battery pack, High Capacity Solar Module, or its internal DC-DC converter.



**WARNING: EXPLOSION HAZARD. DO NOT REMOVE OR REPLACE COMPONENTS UNLESS POWER HAS BEEN DISCONNECTED OR THE AREA IS FREE OF IGNITIBLE CONCENTRATIONS.**  
AVERTISSEMENT : RISQUE D'EXPLOSION . NE PAS RETIRER OU REMPLACER LES COMPOSANTS QUE L'ALIMENTATION EST DÉBRANCHÉ OU ZONE EST LIBRE DE CONCENTRATIONS IGNITIBLE.



**WARNING – EXPLOSION HAZARD Substitution of components may impair suitability for Class I, Division 2**

AVERTISSEMENT - RISQUE D'EXPLOSION. La substitution de composants peut rendre ce matériel inacceptable pour les emplacements de classe I, division 2



**WARNING – EXPLOSION HAZARD Do not disconnect while circuit is live unless area is known to be nonhazardous**

AVERTISSEMENT - RISQUE D'EXPLOSION. Ne débranchez pas lorsque le circuit est en direct , sauf si la zone est connue pour être nonhazardous



**WARNING – All wiring methods must be in accordance with the NEC**

AVERTISSEMENT - Toutes les méthodes de Essorez doivent être en conformité avec la NEC



**WARNING - EXPLOSION HAZARD. Do no remove or replace while circuit is live unless the area is free of ignitable concentrations.**

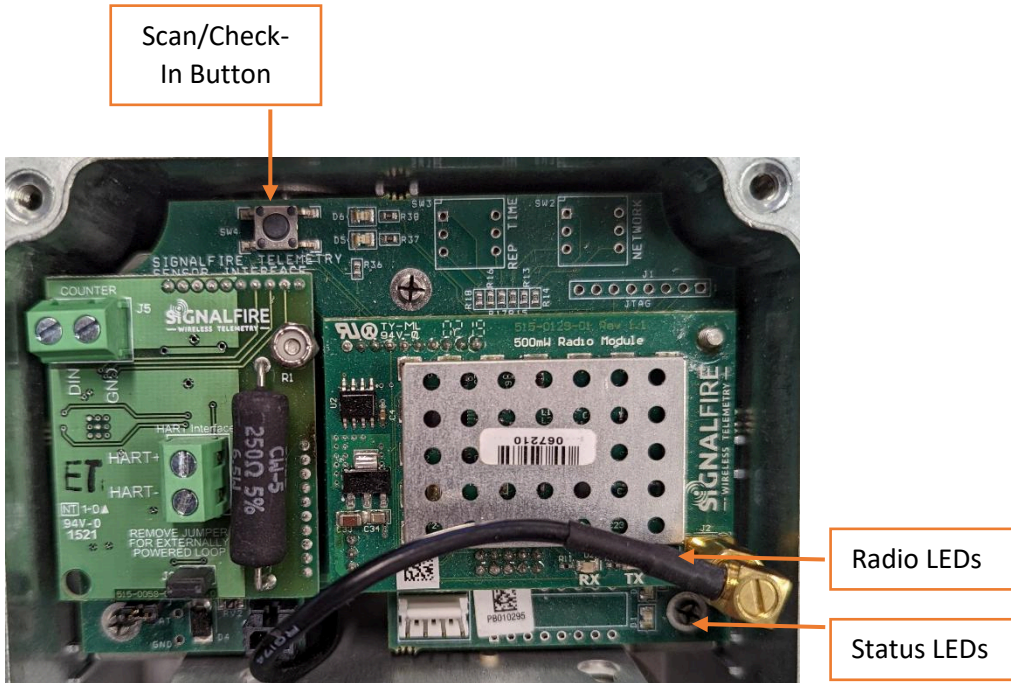
AVERTISSEMENT - RISQUE D'EXPLOSION. Ne pas enlever ou remplacer pendant que le circuit est vivant à moins que la zone soit exempt de concentrations ignitibles.



**WARNING – EXPLOSION HAZARD. Do not remove or replace lamps, fuses or plug-in modules (as applicable) unless power has been disconnected or the area is free of ignitable concentrations.**

AVERTISSEMENT - RISQUE D'EXPLOSION. Ne retirez ni ne remplacez les lampes, les fusibles ou les modules enfichables (le cas échéant) à moins que l'alimentation ait été coupée ou que la zone soit exempte de concentrations inflammables.





### Radio LEDs

- The Radio TX LED (**green**) flashes each time a radio packet is sent. This LED will blink rapidly while searching for the radio network.
- The Radio RX LED (**red**) blinks on each received radio packet.

### Status LEDs

- The Active LED (**green**) will blink at boot up and will blink rapidly when the sensor is being powered.
- The ERROR LED (**red**) will blink to indicate an error condition.

### Scan/Checkin Button

- If this button is pressed the A2 will apply power to the sensor for the configured sensor on time and scan for the HART sensor. If the Hart sensor is detected the HART\_STATUS LED will blink once and its data will be read. The A2 will also send the collected sensor data to the gateway.

## Setup

The nodes need to be set up for correct operation before being fielded. The configurable items include:

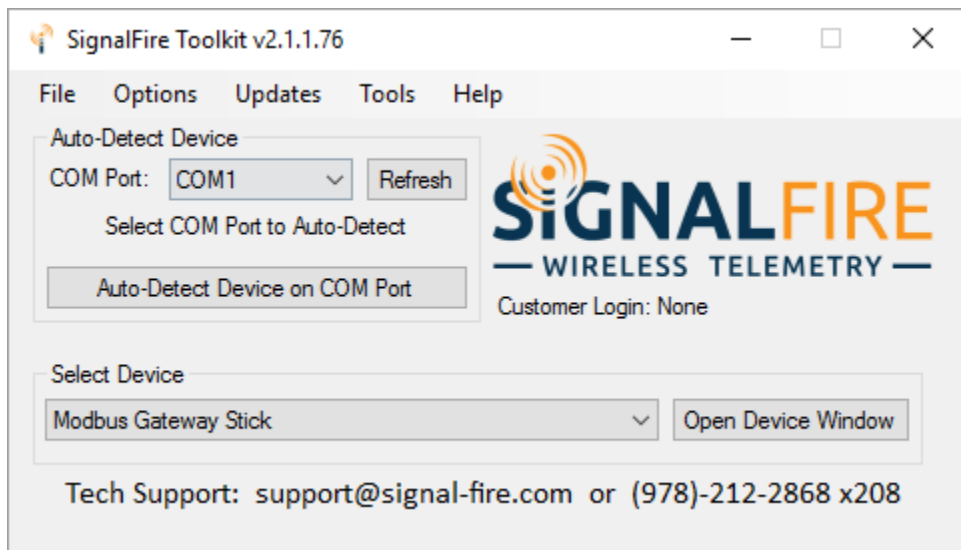
- Network selection
- Encryption Settings
- Check-in period selection
- Modbus Slave ID setting
- Sensor on time

Settings are made using the SignalFire Toolkit PC application and a serial programming cable.

For legacy devices that have the rotary and DIP switches installed, the Modbus Slave ID can also be set using the switches.

### Using the SignalFire Toolkit

The SignalFire Toolkit application can be downloaded at [www.signal-fire.com/customer](http://www.signal-fire.com/customer). After installation, launch the software and the main toolkit window will open:



Select the COM port associated with the A2 Node and click "Auto-Detect Device on COM Port." This will open the device configuration window, where all device settings can be configured.

## Network Setting

The network is set using the SignalFire Toolkit. The network, network group, and Encryption Key/Corporate ID settings must match those of the gateway (and other nodes) for them to communicate.

For legacy devices that have the rotary switches installed, the network is set using rotary switch SW2 on the upper right of the board. If set to zero, then the network can be set using the ToolKit software.

## Encryption

Starting with A2 version r72, it is possible to encrypt over-the-air transmissions to prevent tampering.

Encryption keys replace the Corporate ID system, so it is important that all devices connected to a Gateway have the same encryption key as well as network and network group number.

To set up a node to use encryption, click the checkbox labeled **Enable Encryption** inside the **Set Corporate ID** box:

*The encryption key box. For more details, click the Help button.*

The box will then change into a **Set Encryption Key** box, and it will prompt instead for the encryption key you would like to use. Note that keys may not contain spaces or angle brackets. Enter it and then press **Set**. This will cause the node to drop its network, and only attempt to join networks that use the same encryption key. If you are setting up a new network, you will need to set the encryption key on all of your devices. If you are adding a node to a legacy network, you can simply set the Corporate ID without clicking the Enable Encryption box, and it will remain compatible with the older system.

*Setting the encryption key.*

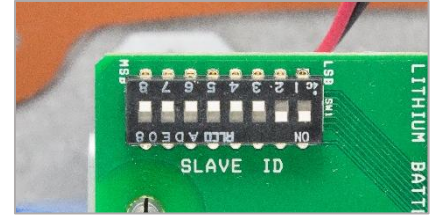
It is also possible to hide your encryption key so it cannot be read. This is the most secure option, but if you forget your key, there is no way to recover it – you have to reset the key on every device on its network. To enable this option, select **Set Encryption Key Unrecoverable** under the **Settings** menu.

Setting the encryption key to be unrecoverable.

## Modbus Slave ID

The Modbus Slave ID can be set with the SignalFire Toolkit, or with the DIP switch located on legacy devices. Note that the DIP switch is no longer installed on new units)

The DIP switch takes an 8-bit binary input which is converted into a slave ID from 1 to 240. In the picture switch 1 and 2 are on, which is 00000011 and results in a slave ID of 3. The least significant bit (LSB) is on the right and is labeled 1 above the row of switches. The A2 must be power cycled after setting the DIP switch. *Note: The DIP switch must be set to 0 (all switches off) in order to set the Slave ID with the SignalFire Toolkit.*



## Sensor Settings

The A2-HART Node will supply 18 volts to the sensor. The sensor warm-up time must also be configured. The default is 2 seconds which is used for most pressure and other simple sensors. Radar sensors often require a longer warm-up time. Contact your sensor manufacturer or SignalFire for details.

## Check-In Interval

The check-in period is set using the SignalFire Toolkit.

For legacy devices that have the rotary switch SW1 in the upper right corner of the board the check-in can be set using the switch. If set to position 0 the check-in interval can be configured using the Toolkit. The switch settings are shown in the following table:

Switch Setting	Check-In Period
0	1 min
1	2 min
2	4.5 min
3	10 min
4	30 min
5	1 hr
6	5 sec
7	15 sec

Sensor On Time (sec)

☐ Sensor Always On

Sensor Power Mode

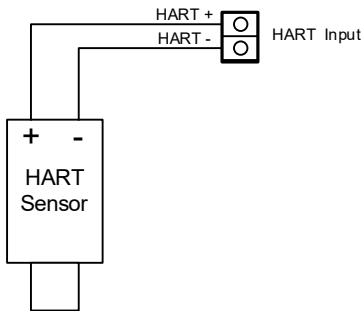
The default setting is 2 for a check-in period of 4.5 minutes.

*Note: Settings 6 and 7 should only be used for testing or a non-battery pack powered node as they will have a high power draw.*



## HART Sensor Connections

Wiring A HART sensor may then be connected to the system using the screw terminal connector on the connector daughterboard. HART sensors using the two HART terminals as shown in the following diagram:



Up to 3 additional HART sensors may be daisy chained in parallel.

The system will supply a minimum of 18 Volts to the sensors for 2 seconds (by default) and then read the HART data from each sensor. If 4 HART devices are connected the total loop current will be 16mA, resulting in 4V being dropped across the 250 ohm load resistor in the SignalFire node. This leaves 14V available to power the sensors.

Upon initial power up, the SignalFire HART node will poll for HART devices addressed 1 through 4, to discover which nodes are connected. The node will read the Manufacturer and device ID for each discovered sensor and send this value to the gateway at each check-in. Also the node will blink the green LED, D6 for each HART sensor that is detected. For example, if HART sensor ID 2 and 4 are connected, D6 will blink twice, pause, and then blink four times.

To manually run the HART discovery process and force a check-in to the gateway, simply press switch SW4.

The discovery process will be re-run automatically every 100 check-ins to see if any new nodes have been added to the loop.

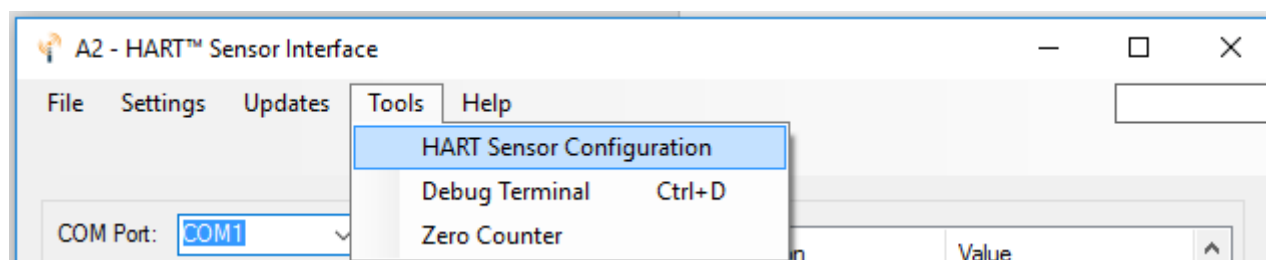
### Externally powered HART loop

If the HART loop is to be powered externally, remove jumper J3 from the HART card and configure the sensor on time to 0 seconds using the ToolKit. Connect the HART+ and HART- terminals in parallel to the HART devices. Note that in this configuration the 250ohm HART resistor must be installed in the loop as the 250ohm resistor on the A2 is no longer in series with the loop.

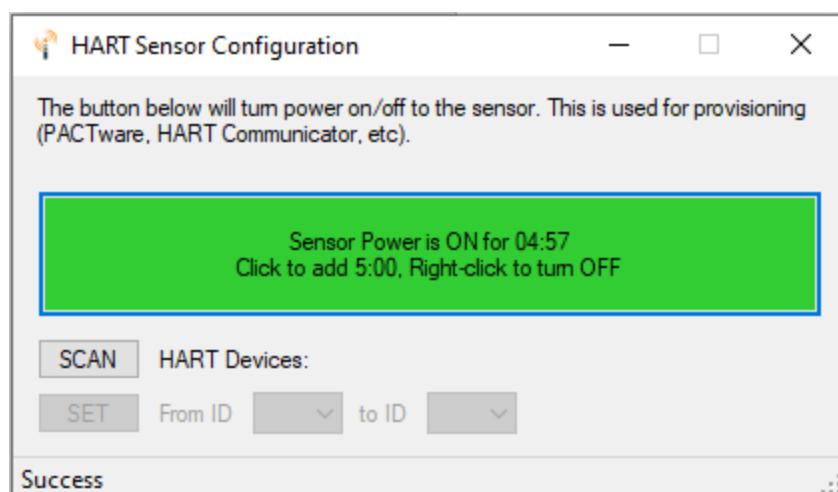
## HART Sensor Configuration

The A2 requires that the attached HART sensor is configured to HART ID 1, 2, 3, or 4 in “multi-drop” mode. The sensor may be configured using a HART modem, or built in display/buttons. Alternatively, the A2 provides tools that allow the HART ID of the attached sensor to be changed.

To set the HART ID, go to the **Tools** dropdown menu and select **HART Sensor Configuration**.



If the sensor is not set to **Sensor Always On**, first click the large button to power the sensor for configuration. Each click will power the sensor for 5 minutes, or until turned off. If the attached sensor has a warm-up time wait until the sensor is fully powered on before the next step.

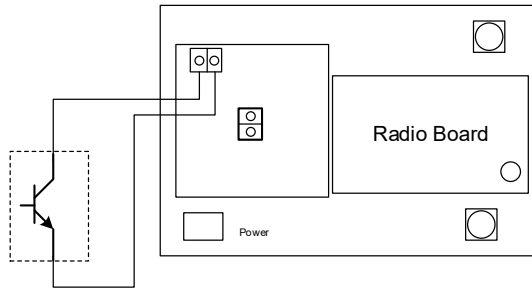


To change the HART ID the initial ID must be known. To find the ID, click **Scan**. Most sensors default to 0. To change the ID select the existing ID on the left, select 1, 2, 3 or 4 on the right, and click the **Set** button.

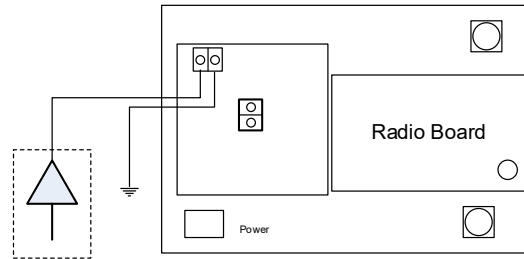
*If only a single HART device is connected it should be configured as HART ID 1.*

The counter input may be either open collector type (sinking ground), dry contact inputs, or voltage pulse (up to 15V) type. The input can count up to 2000 Hz.

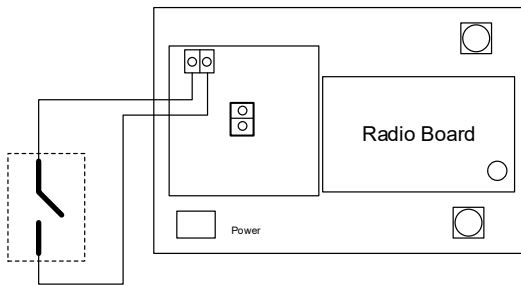
The counter input may be connected to the board as shown in the following diagrams:



Open Collector Connection



Voltage Pulse Connection



Dry Contact Connection

The count accumulates and the current count is stored into non-volatile memory. If the system is reset the counts will revert to the last stored value from non-volatile memory.

The system also reports the state of the contact closure input at the time of check-in.

### Digital Input Debounce

In cases where it is desired to accurately totalize digital input counts it may be necessary to enable the digital input debounce timer. The debounce timer is useful when dealing with dry contacts that may otherwise produce extra counts when they close. To enable the digital debounce, open the configuration window for the node in the SignalFire Toolkit and select **Digital Input Debounce** from the **Settings** menu. A typical value for a dry contact would be 100mS. Any extra counts due to contact bounce within the debounce time setting will be ignored.

## Remote Modbus Register Mapping

# 13

The A2-HART sends data to a SignalFire Telemetry Modbus Gateway. The data that is sent to the gateway is available at the gateway in registers where it can then be read by a Modbus RTU. Consequently, the node needs to have a unique (to the network it is in) Modbus slave ID which the gateway will use to store its unique data.

### Modbus Registers

Every check-in period, the sensor(s) are read and data is sent to the gateway. The gateway will save the data under the set Modbus ID in 16-bit registers. If a HART device does not return all four variables, the 'units code' and variable register values will be set to 0 for any unreturned values.

The register map for this system is below.

### Register Map

Register Number	Register Address (Offset)	Description
41004	1003	Digital Input state (1=closed, 0=open)
41005-41006	1004-1005	32-bit Hardware counter, 1004=high word
41007	1006	Average frequency over the last check-in period times 10
41012	1011	Ave. counts per minute over the check-in period times 10
41013	1012	Frequency over 2 seconds at check-in time times 10
42001	2000	HART ID 1: Manufacturer's ID Code/Device Type (ID=MSB, Device=LSB)
42002	2001	HART ID 1: Device ID Number (ID high bite = MSB, ID mid byte = LSB)
42003	2002	HART ID 1: Device ID Number, HART Status (ID low byte=MSB, Status=LSB)
42004	2003	HART ID 1: PV & SV Units Code (PV=MSB, SV=LSB)
42005	2004	HART ID 1: TV & QV Units Code (TV=MSB, QV=LSB)
42006-42007	2005-2006	HART ID 1: Primary Variable (PV) (two registers) (float)
42008-42009	2007-2008	HART ID 1: Secondary Variable (SV) (two registers) (float)
42010-42011	2009-2010	HART ID 1: Tertiary Variable (TV) (two registers) (float)
42012-42013	2011-2012	HART ID 1: Quaternary Variable (QV) (two registers) (float)
42014	2013	HART ID 2: Manufacturer's ID Code/Device Type (ID=MSB, Device=LSB)
42015	2014	HART ID 2: Device ID Number (ID high bite = MSB, ID mid byte = LSB)
42016	2015	HART ID 2: Device ID Number, HART Status (ID low byte=MSB, Status=LSB)
42017	2016	HART ID 2: PV & SV Units Code (PV=MSB, SV=LSB)
42018	2017	HART ID 2: TV & QV Units Code (TV=MSB, QV=LSB)
42019-42020	2018-2019	HART ID 2: Primary Variable (PV) (two registers) (float)
42021-42022	2020-2021	HART ID 2: Secondary Variable (SV) (two registers) (float)
42023-42024	2022-2023	HART ID 2: Tertiary Variable (TV) (two registers) (float)
42025-42026	2024-2025	HART ID 2: Quaternary Variable (QV) (two registers) (float)
42027	2026	HART ID 3: Manufacturer's ID Code/Device Type (ID=MSB, Device=LSB)

42028	2027	HART ID 3: Device ID Number (ID high bite = MSB, ID mid byte = LSB)
42029	2028	HART ID 3: Device ID Number, HART Status (ID low byte=MSB, Status=LSB)
42030	2029	HART ID 3: PV & SV Units Code (PV=MSB, SV=LSB)
42031	2030	HART ID 3: TV & QV Units Code (TV=MSB, QV=LSB)
42032-42033	2031-2032	HART ID 3: Primary Variable (PV) (two registers) (float)
42034-42035	2033-2034	HART ID 3: Secondary Variable (SV) (two registers) (float)
42036-42037	2035-2036	HART ID 3: Tertiary Variable (TV) (two registers) (float)
42038-42039	2037-2038	HART ID 3: Quaternary Variable (QV) (two registers) (float)
42040	2039	HART ID 4: Manufacturer's ID Code/Device Type (ID=MSB, Device=LSB)
42041	2040	HART ID 4: Device ID Number (ID high bite = MSB, ID mid byte = LSB)
42042	2041	HART ID 4: Device ID Number, HART Status (ID high byte=MSB, Status=LSB)
42043	2042	HART ID 4: PV & SV Units Code (PV=MSB, SV=LSB)
42044	2043	HART ID 4: TV & QV Units Code (TV=MSB, QV=LSB)
42045-42046	2044-2045	HART ID 4: Primary Variable (PV) (two registers) (float)
42047-42048	2046-2047	HART ID 4: Secondary Variable (SV) (two registers) (float)
42049-42050	2048-2049	HART ID 4: Tertiary Variable (TV) (two registers) (float)
42051-42052	2050-2051	HART ID 4: Quaternary Variable (QV) (two registers) (float)
42053	2052	Bitmap of the Sensors Read in Last Check-in
49987	9986 or 65523	Low Battery Alarm (0 = battery above 3.0V, 1 = battery below 3.0V)
49988	9987 or 65524	Major revision number for the mainboard
49989	9988 or 65525	Minor revision number for the mainboard
49990	9989 or 65526	Major revision number for the radio
49991	9990 or 65527	Minor revision number for the radio
49992	9991 or 65528	High 16 bits of SFTS node address
49993	9992 or 65529	Low 16 bits of SFTS node address (the radio ID)
49994	9993 or 65530	Slave ID readback
49995	9994 or 65531	Received signal strength of last packet from the slave
49996	9995 or 65532	Battery voltage of the Modbus client, in millivolts
49997	9996 or 65533	Minutes until this slave will time out, unless new data is received
49998	9997 or 65534	Number of registers cached for this slave device
49999	9998 or 65535	Remote device type. 35 for A2_HART.

*Note: HART Register values are only reported if the HART device is detected. For example, if only HART ID 1 is connected registers 2013-2051 will not be reported to the Gateway.*

Debug and configuration information is available if a connection is made via the debug port on the main board. A USB converter cable (available from SignalFire) must be used for this interface.

Debug and advanced configuration may be done using the SignalFire Toolkit PC application.

## Product Disposal Information

16

To ensure environmental safety and compliance, please follow these disposal instructions for the product and its components:

### Lithium Primary Battery:

This product contains lithium primary batteries, which must be removed before disposal. Lithium batteries must be recycled through specialized facilities due to their fire risk. Do not place batteries in regular trash.

### Electronic Components:

This product contains electronics that must be recycled through approved e-waste recycling programs. Electronics can contain harmful materials and should be prevented from entering landfills. Do not place electronics in regular trash.

### Metal Parts:

Any metal components can be separated and recycled through your local metal recycling facility.

### Packaging Materials:

Recycle or reuse packaging materials such as cardboard or plastics, following local recycling guidelines.

For local disposal sites refer to:

- [Call2Recycle](#) (USA, Canada)
- [Earth911](#) (USA, Canada)
- [SERI](#) (International)

In the USA or more information, visit:

- [EPA's battery disposal guide](#)
- [EPA's electronics recycling page](#)

By following these guidelines, you help reduce waste and support environmental sustainability.



## Technical Support and Contact Information

SignalFire Telemetry  
140 Locke Dr, Suite B  
Marlborough, MA 01752  
(978) 212-2868  
[support@signal-fire.com](mailto:support@signal-fire.com)

# 17

### *Revision History*

Revision	Date	Changes/Updates
2.4	8/3/16	Updated layout. Added section on encryption
2.5	12/13/21	Updated for new HART card and no DIP switches, updated register map
2.6	2/21/23	Update Hart Sensor Configuration window.
2.7	2/24/25	Added product disposal information.