

Assembly Instructions for the Sentinel with Solar Brackets for a Magnetrol 706 Sensor

Parts List:

- | | |
|----------------------------------|--------------------------|
| 1 Magnetrol mounting bracket | 1 Cable clamp |
| 1 ½ NPT Plug with 2 washers | 4 ¼-20 flange nuts |
| 1 Riser clamp | 1 ½ NPT Elbow and nipple |
| 2 3/8-16 x ¾” Unthreaded spacers | |

Assembly

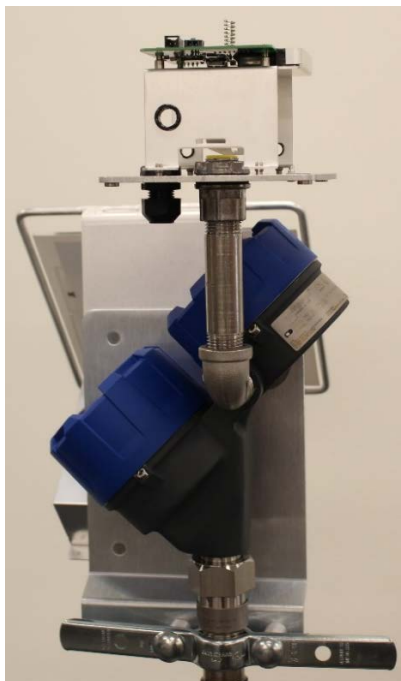
1. Install Sentinel

Note: Orient sensor with cover locking screws facing North

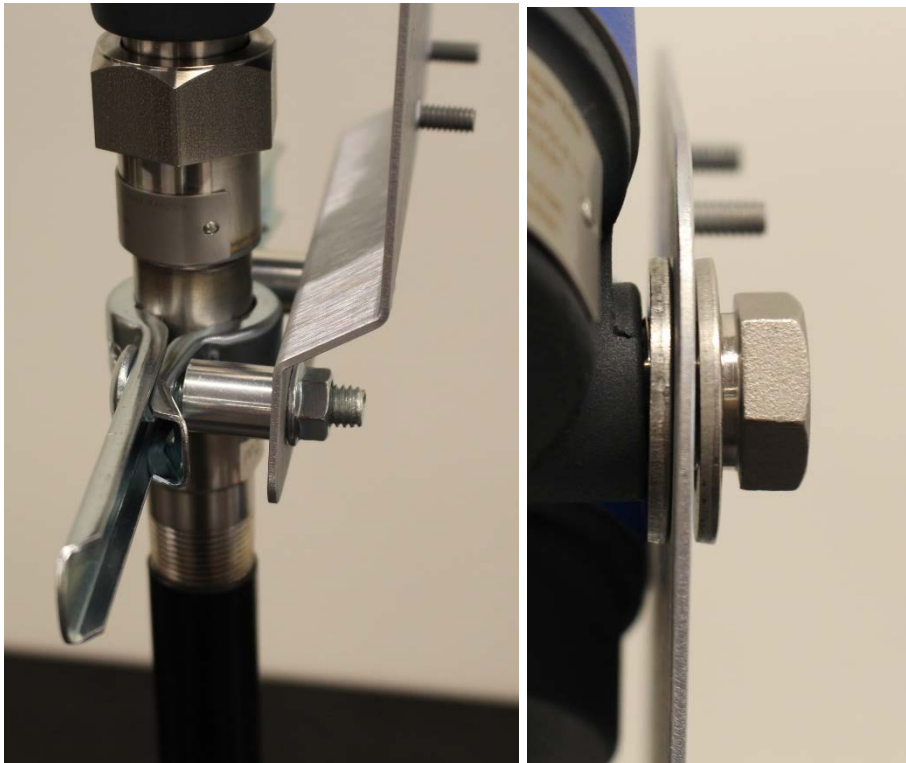
- a. Attach pipe nipple into elbow

Note: you may want to run wires through fittings before assembly

- b. Use thread sealant to attach elbow to sensor with pipe nipple vertical
- c. Attach Sentinel and complete sensor wiring
 - i. Connect HART+ terminal on Sentinel to + terminal on the 706
 - ii. Connect HART- terminal on Sentinel to – terminal on the 706



2. Loosely attach bracket
 - a. Remove nuts from clamp
 - b. Place clamp around sensor below tag
 - c. Slide round spacers onto bolts
 - d. Insert carriage bolts through flat bracket
 - e. Thread on nuts, **DO NOT TIGHTEN**
 - f. Place one washer on either side of large hole
 - g. Apply thread sealant to plug
 - h. Screw in plug, but leave loose enough for bracket to move



3. Tighten bracket

- a. Ensure clamp is not crooked, and lift bracket so plug is resting on the lower half of the hole

NOTE: the plug should not hold a vertical load after assembly

- b. Alternating between nuts to keep clamp straight, tighten nuts to 19 Ft-Lbs
- c. Tighten plug



1/4/2021

Page 4 of 5

4. Attach Solar Panel

- a. Attach Solar Panel assembly with lock nuts
- b. Use cable clamp to guide cable



5. Plug in Solar Panel

- a. Run power cable through cable gland on Sentinel
- b. Plug solar panel assembly into Sentinel, secure power cable
- c. Coil excess cable inside sentinel and tighten cable gland
- d. Install Sentinel cover

