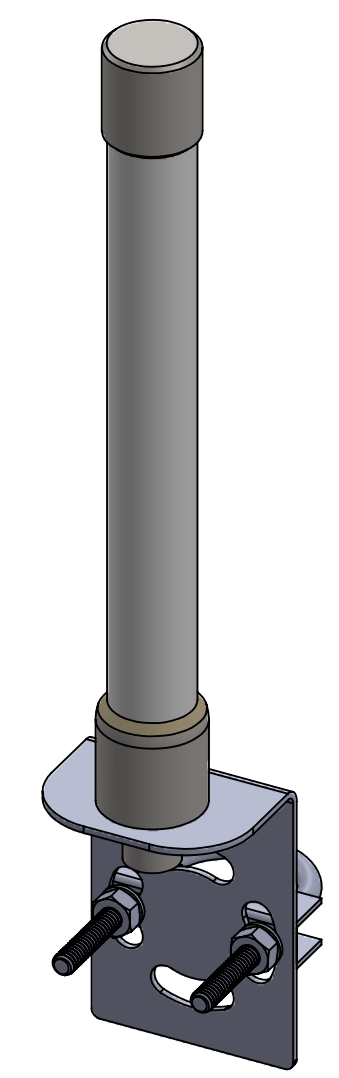
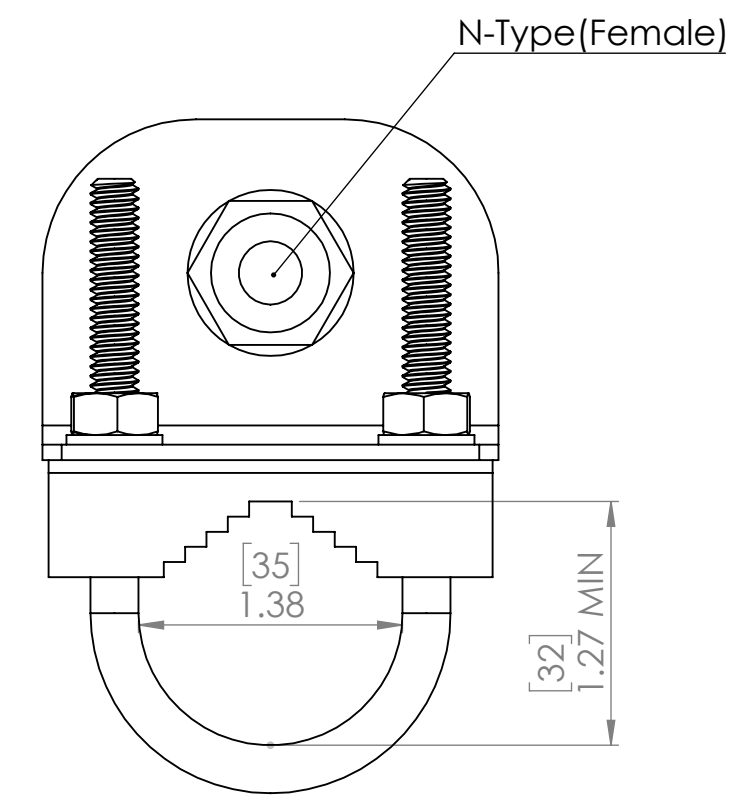
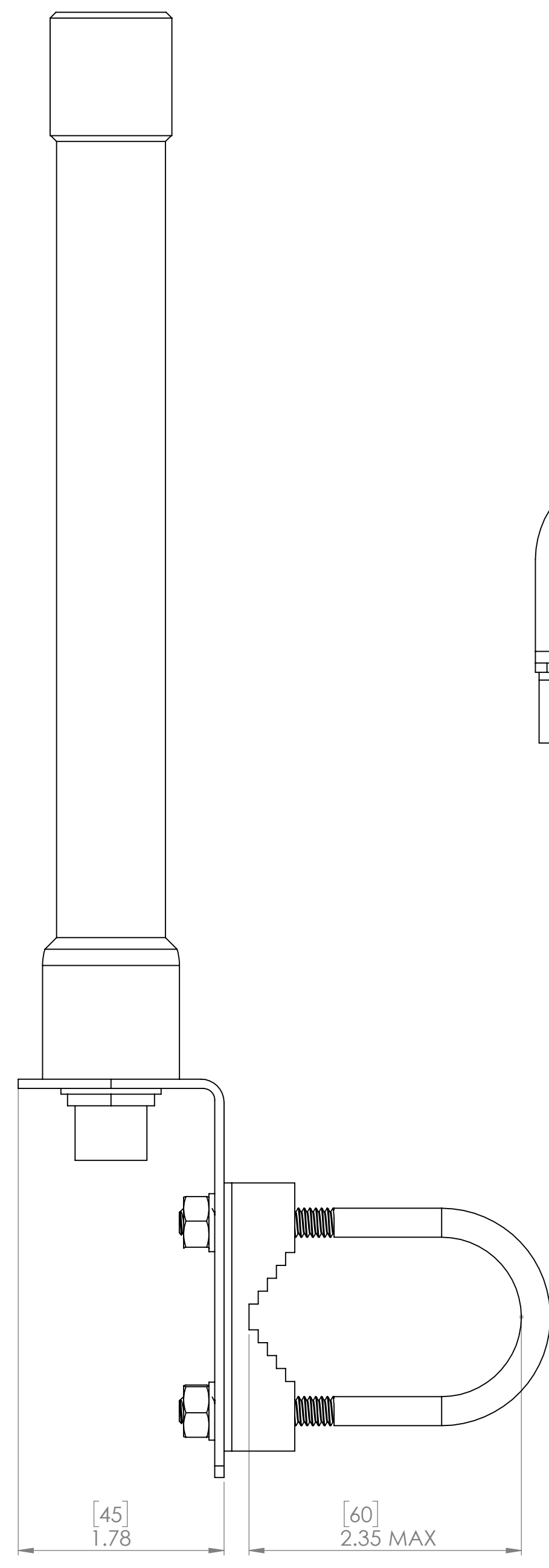
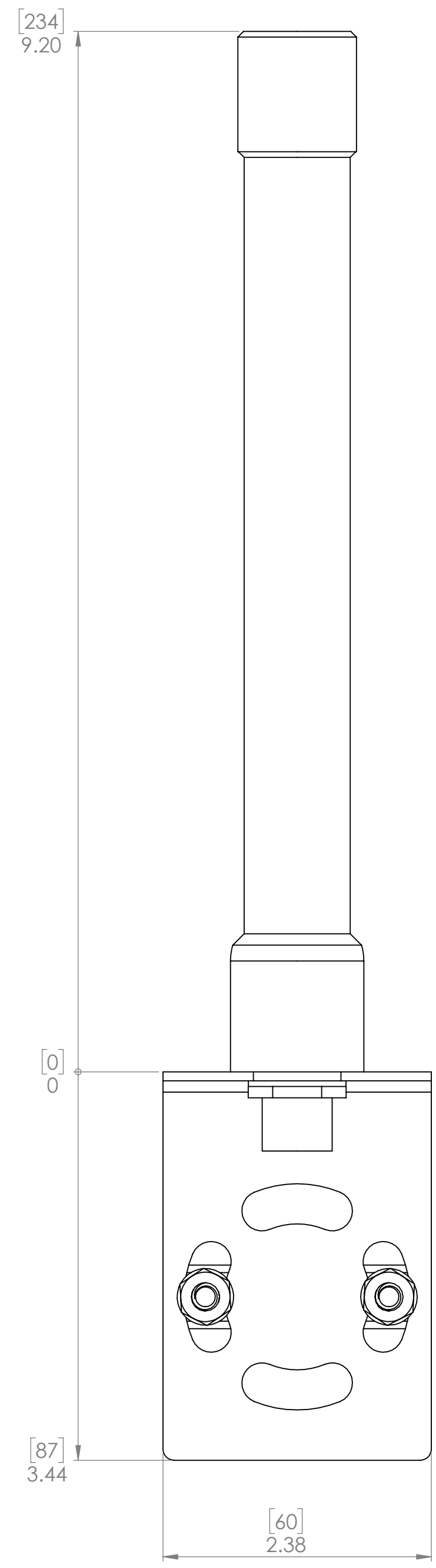


REVISIONS				
ZONE	REV.	DESCRIPTION	DATE	APPROVED
	A	INITIAL RELEASE	9/23/2021	S. BLODGETT



Specifications		
Order code	ANT-LTE-OMNI-10	
Frequency	698~960 MHz	1710~2690 MHz
Gain	2 dBi	4 dBi
V.S.W.R.	< 3.4	< 2.5
Impedence	50 OHM	
Material	Fiberglass, White, UV	
Cable	10 Feet[3M], KSR195 Low Loss Coaxial	
Cable Connectors	N-type(Male) - Right Angle SMA(Male)	

PROPRIETARY AND CONFIDENTIAL
 THE INFORMATION CONTAINED IN THIS DRAWING IS THE SOLE PROPERTY OF SIGNALFIRE TELEMETRY. ANY REPRODUCTION IN PART OR AS A WHOLE WITHOUT THE WRITTEN PERMISSION OF SIGNALFIRE TELEMETRY IS PROHIBITED.

UNLESS OTHERWISE SPECIFIED:	NAME	DATE
DIMENSIONS ARE IN INCHES	DRAWN	S.BLODGETT 5/1/2019
TOLERANCES:	CHECKED	
FRACTIONAL ± 1/64	ENG APPR.	
ANGULAR: MACH: 1° BEND ± 1/2°	MFG APPR.	
TWO PLACE DECIMAL ± .01	Q.A.	
THREE PLACE DECIMAL ± .005	COMMENTS:	
INTERPRET GEOMETRIC TOLERANCING PER:		
MATERIAL		
FINISH		
DO NOT SCALE DRAWING		

SignalFire Telemetry	
TITLE: Remote LTE ANT	
DWG. NO. 965-0040-01	REV A
SCALE 1:1	SHEET 1 OF 1