

# Interface Manual

## Tilt Scout

*SignalFire Model: Scout-TILT-3AABIS*





The SignalFire Tilt Scout is an Intrinsically Safe wireless Inclinator used for Hatch and Pump Jack monitoring:

- Thief Hatch state reporting – Closed, Cracked, Open (Thief Hatch Mode).
- Pump Jack Status reporting - Running/Not Running (Pump Jack Mode)
- Easy to install
- Internal long life battery, 5+ years of operation
- Patent pending sensor technology
- Sends data to a SignalFire Gateway
- AES 128bit Encryption
- Pushbutton zeroing
- Report on state change

## Specifications

Enclosure Size	3.5" wide × 3.1" tall × 2.3" deep
Power Source	Internal AA IS Lithium battery pack <i>SignalFire Part Number: 810-0031-01</i>
Temperature Rating	Operating range: -40°C to +80°C C1D1 certified operating range: -40°C to +60°C
Radio	40mW, 902-928MHz Ism Band, FHSS radio, internal antenna
Compliance	Class I, Division 1 groups C and D. EXia = Intrinsically Safe Apparatus (Appareil à sécurité intrinsèque). Radio FCC and IC certified.
Standards	Intrinsically Safe Apparatus and Associated Apparatus For Use In Class 1, 2, 3, Division 1, Hazardous (Classified) Locations [UL 913:2013 Ed.8+R:16Oct2015] Intrinsically Safe And Non-Incendive Equipment For Use In Hazardous Locations (R2016) [CSAC22.2#157:1992 Ed.3+G1;U2]
Resolution	<0.1 degree
Reporting Frequency	Sends data every 10 minutes or immediately after a state change

  <b>Exia</b> <b>Intertek</b> <b>4003827</b>	<h1>TILTScout</h1> <p>Class I, Div 1 Groups C, D. T3  Ambient Temp: -40°C to +60°C  Install per Manual (Installer par manuel):960-0084-01  FCC ID:W8V-TS  IC:8373A-TS</p>	<h2>SN:TSxxxxxx</h2> <div data-bbox="1055 1533 1380 1617" style="border: 1px solid black; padding: 5px; text-align: center;">         BARCODE       </div>
--	---	--



**WARNING:** Use of this equipment in a manner not specified by the manufacturer may impair the protection provided by the equipment.

**AVERTISSEMENT:** L'utilisation et l'implémentation de cet équipement d'une manière non spécifiée par le fabricant peut affecter son intégrité ainsi que sa protection



**WARNING:** The use of any parts not supplied by the manufacturer violates the safety rating of the equipment.

**AVERTISSEMENT:** L'utilisation de composants ne provenant pas du fabricant compromet la sécurité et la certification du produit.

## Connections and Components



### Radio LEDs

- The Radio TX LED (green) flashes each time a radio packet is sent. This LED will blink rapidly while searching for the radio network.
- The Radio RX LED (red) blinks on each received radio packet.

### Status LEDs

- The Active LED (green) will blink at boot up and will blink quickly when the sensor is being read.
- The ERROR LED (red) will blink to indicate an error condition.

### Zero Button

- The Zero button allows the sensor to be zeroed when the unit is installed, and the hatch is in the closed position. This is only used in Thief Hatch mode

### Checkin Button

- If this button is pressed the Tilt Scout will take a sensor reading and send the data to the gateway.

## Setup

# 5

The Tilt Scout must be configured for correct operation before being fielded. The configurable items include:

- Tilt Scout Mode
- Modbus Slave ID
- Network selection
- Corporate ID or Encryption
- Node Name

All settings are made using the SignalFire Toolkit PC application and SignalFire 4-pin USB cable (Serial-4PIN).

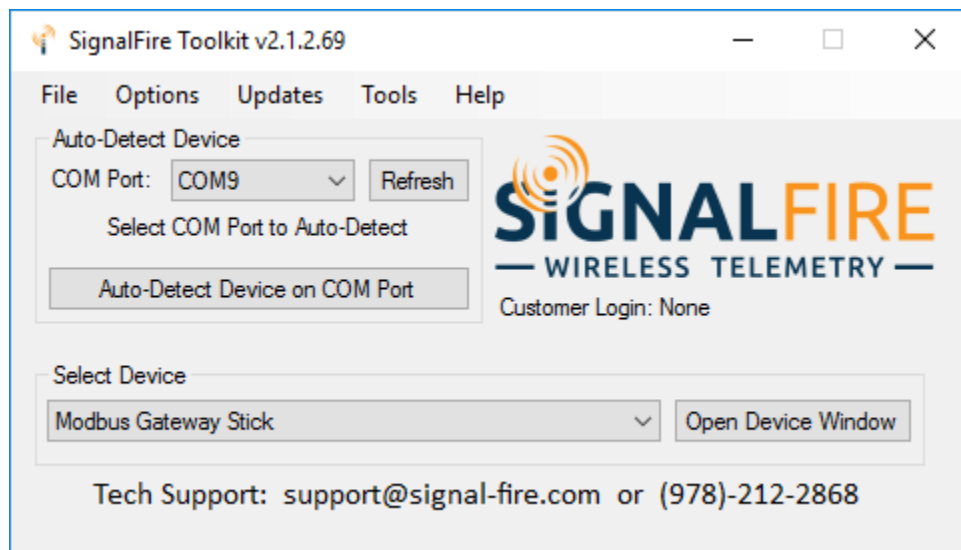


**WARNING: Perform the steps in this section (Setup) in a safe location only.**

**AVERTISSEMENT: Les étapes de démarrage (setup) doivent être fait dans une zone sécuritaire.**

Using the SignalFire Toolkit

The SignalFire Toolkit application can be downloaded at [www.signal-fire.com/customer](http://www.signal-fire.com/customer). After installation, launch the software and the main toolkit window will open:



Select the COM port associated with the Tilt Scout and click "Auto-Detect Device on COM Port." This will open the device configuration window, where all device settings can be configured.

The screenshot shows the Tilt Scout application window. The interface is divided into several sections:

- Top Bar:** Contains the application name "Tilt Scout" and a menu with "File", "Settings", "Updates", "Tools", and "Help". A "Passed" status indicator is visible in the top right corner, circled with a black dot and the number 4.
- COM Port Section:** Located on the left, it includes a dropdown menu for "COM Port" set to "COM4", a "Refresh" button, and a "COM4 Open" button circled with a black dot and the number 1. Below this are "Open", "Close", and "Offline" buttons, and a "Connect/Update" button.
- Node Information Table:** A table listing various node details:
 

Product	Thief Hatch
Slave ID	10
Node Name	not set
Radio Connectivity	Connected -57dBm
Mainboard Version	0.75
Radio Version	2.50 (sleeping)
Radio Address	39527
Corporate ID	<Encrypted>
Radio Mode	Sleeping
Radio Network	3
Radio Network Group	0
Radio Power (dBm)	14
Checkin Interval	10 minutes
Unlatched Angle	1.5
Open Angle	15

 A black dot with the number 2 is placed over the bottom part of this table.
- Reported Sensor Values Table:** A table with columns "Address", "Description", and "Value":
 

Address	Description	Value
3000	Hatch is Closed	1
3001	Hatch is Unlatched	0
3002	Hatch is Open	0
3003	Hatch State	0 (Closed)
3004	Open State Count	1
3005	Low Battery	0
3006	Error Status	0
3007-3008	Angle (degrees)	0.027976
65523	Low Battery Alarm	0
65522	Battery Voltage (mV)	3600

 A black dot with the number 5 is placed over the "0 (Closed)" value in the "Hatch State" row.
- Settings Section:** Located at the bottom right, it includes:
  - Slave ID: 10 (Set)
  - Node Name: (Set)
  - Radio Mode: Sleeping (Set)
  - Radio Network: 3 (Set)
  - Radio Network Group: 0 (Set)
  - Set Encryption Key: (Help)
  - Enable Encryption (Set)
  - Key: signalfire (Set)
 A black dot with the number 3 is placed over the "Set Encryption Key" label.
- Battery Life Est.:** Shows "5+ years (Based on new battery.)".
- Status Bar:** At the bottom left, it displays "Success".

- ① COM Settings
- ② Node Information
- ③ Configurable node settings
- ④ Command successfully passed to node (displays fail if unsuccessful)
- ⑤ Current readings

## Tilt Scout Mode

The default operation mode for the Tilt Scout is “Thief Hatch Mode”. When the Tilt Scout is to be used for Pump Jack Monitoring the mode must be changed. From the ‘Settings’ menu, select ‘Mode’, then select ‘Pump Jack Mode’. Note that the device Modbus register map changes with the configured mode setting.

## Network Setting

The network is set using the SignalFire Toolkit. The network, network group, and corporate ID

settings must match those of the gateway (and other nodes) in order for them to communicate

Radio Network	1	Set
Radio Network Group	0	Set

## Encryption

It is possible to encrypt over-the-air transmissions to prevent tampering. Encryption keys replace the Corporate ID system, so it is important that all devices connected to a Gateway have the same encryption key as well as network and network group number.

To set up a device to use encryption, click the checkbox labeled **Enable Encryption** inside the **Set Corporate ID** box:

*The encryption key box. For more details, click the Help button.*

The box will then change into a **Set Encryption Key** box, and it will prompt instead for the encryption key you would like to use. Note that keys may not contain spaces or angle brackets. Enter it and then press **Set**. This will cause the Sentinel to drop its network, and only attempt to join networks that use the same encryption key. If you are setting up a new network, you will need to set the encryption key on all of your devices. If you are adding a Sentinel to a legacy network, you can simply set the Corporate ID without clicking the Enable Encryption box, and it will remain compatible with the older system.

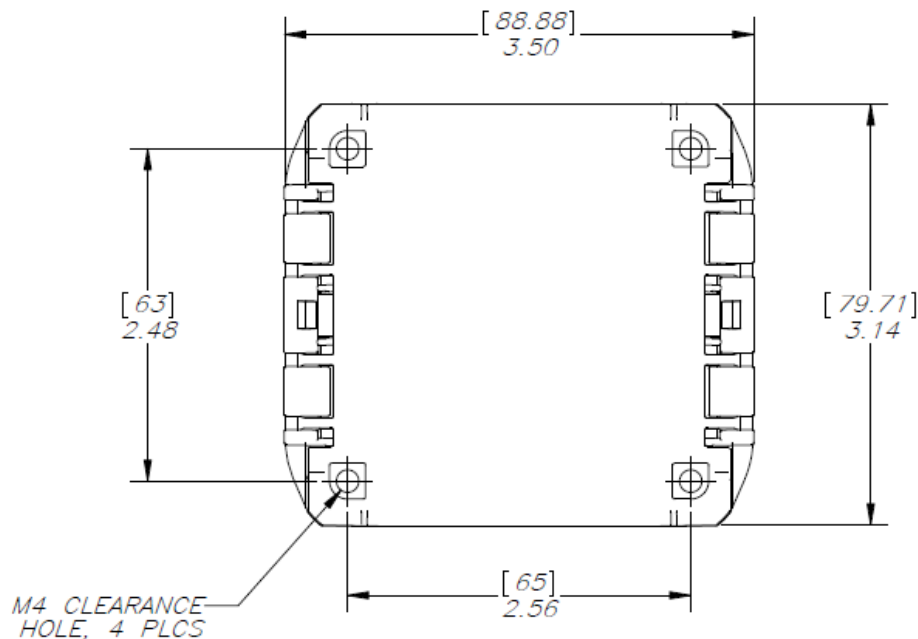
*Setting the encryption key.*

It is also possible to hide your encryption key, so it cannot be read. This is the most secure option, but if you forget your key, there is no way to recover it – you will have to reset the key on every device on its network. To enable this option, select **Set Encryption Key Unrecoverable** under the **Settings** menu.

## Mounting Requirements

The sensor technology used does not require a specific orientation for installation, the device can be installed in any orientation or angle.

A suitable bracket must be used to adapt the Tilt Scout to a hatch cover or to the arm of a pump jack. The drawing below shows the dimension of the mounting holes available.



**WARNING:** The Tilt Scout must be securely mounted such that it cannot sustain a fall. Failure to do this may impact the safety rating of the device

**AVERTISSEMENT:** Le Tilt Scout doit être solidement fixé de sorte qu'il ne puisse pas supporter une chute. Ne pas le faire peut affecter la cote de sécurité de l'appareil



**WARNING:** The Tilt Scout must be mounted in a location free of high vibrations. Over time vibrations can damage the Tilt Scout or battery pack, which could impair its safety ratings. Do not mount directly to continuous vibrating equipment such as pumps or compressors.

**AVERTISSEMENT:** Le Tilt Scout doit être monté dans un endroit sans vibrations élevées. Au fil du temps, les vibrations peuvent endommager le Flux Totalizer ou la batterie, ce qui pourrait nuire à ses cotes de sécurité. Ne pas monter directement sur des équipements vibrants continus tels que des pompes ou des compresseurs.



## Sensor Zeroing – Thief Hatch Mode Only

Once the monitor has been secured to the hatch, its angle sensor must be calibrated. The hatch must be fully closed and latched before zeroing. Press and hold the ZERO button for about 2 seconds (until the status LED turns on), then release. Wait approx. 5 seconds for the sensor to go through its internal calibration and zeroing process. If successful, the status LED will blink 3 times. If the calibration fails (due to movement), the red error LED will blink 3 times, if this happens the zero process must be done again.

## Remote Modbus Register Mapping

The Tilt Scout sends data to a SignalFire Telemetry Modbus Gateway, available at the gateway in registers where it can then be read by a Modbus RTU.

This data is accessible at same Slave ID that was configured for the Tilt Scout.

### Thief Hatch Mode

Register Number	Register Address (Offset)	Description
43001	3000	Hatch Closed State. 1=Closed, 0=Not closed
43002	3001	Hatch Unlatched State. 1=Unlatched, 0=Not unlatched
43003	3002	Hatch Open State. 1=Open, 0=Not Open
43004	3003	Hatch State. 0=Closed, 1=Unlatched, 2=Open
43005	3004	Hatch Open Count. Total number of hatch openings
43006	3005	Low battery alarm. 1=Low battery
43007	3006	Error Status. 0 = no errors, 1 = sensor error
43008-43009	3007-3008	Measured Angle (32Bit Float)

### Pump Jack Mode

Register Number	Register Address (Offset)	Description
43001	3000	Pump Jack Status. 1=Running, 0=Not Running
43002	3001	Error Status. 0 = no errors, 1 = sensor error

## Common Registers (Available in both Thief Hatch and Pump Jack Modes)

Register Number	Register Address (Offset)	Description
49988	9987 or 65524	Major revision number for the mainboard
49989	9988 or 65525	Minor revision number for the mainboard
49990	9989 or 65526	Major revision number for the radio
49991	9990 or 65527	Minor revision number for the radio
49992	9991 or 65528	High 16 bits of SFTS node address
49993	9992 or 65529	Low 16 bits of SFTS node address (the radio ID)
49994	9993 or 65530	Slave ID readback
49995	9994 or 65531	Received signal strength of last packet from the slave (Signed INT)
49996	9995 or 65532	Battery voltage of the Modbus client, in millivolts
49997	9996 or 65533	Minutes until this slave will time out, unless new data is received
49998	9997 or 65534	Number of registers cached for this slave device
49999	9998 or 65535	Remote device type. 57 = Thief Hatch Mode, 61 = Pump Jack Mode

## Internal Lithium Battery Replacement

Battery Packs can be changed with the node in place.

- 1 Open the cover from the enclosure.
- 2 Switch the power switch to the OFF position
- 3 Remove the two screws that hold the PCB in place
- 4 Unplug the battery from the PCB, by depressing the locking clip on the connector.
- 5 Install new battery pack
- 6 Connect the battery to the PCB battery connector.
- 7 Reinstall the PCB assembly



**WARNING: Use of any battery other than the SignalFire part number 810-0031-01 will impair the protection provided by the equipment.**

**AVERTISSEMENT: La sécurité intrinsèque et la protection du produit seront compromis par l'utilisation de batteries autres que celle fournie par SignalFire ayant comme numéro de pièce 810-0031-01.**

## Cleaning Instructions

The outside of the enclosure may be cleaned with water, mild soap, and a damp cloth as needed. High pressure washing is not recommended.



**WARNING: Electrostatic Discharge Hazard! Care must be taken to avoid the potential of creating a charge on the enclosure or antenna. Do not wipe with a dry cloth. Do not brush against the enclosure with clothing or gloves.**

**AVERTISSEMENT: Danger de décharges électrostatiques! Utilisez les précautions nécessaires pour éviter l'accumulation d'électricité statique sur l'antenne. Ne pas nettoyer l'antenne avec un linge sec. Ne pas frotter le boîtier avec des vêtements ou des gants.**



**WARNING: Only connect to the debug port in a safe area! Ensure that the maximum voltage applied to the configuration port is less than 5 VDC!**  
**AVERTISSEMENT: Branchez le port de débogage que dans une zone secure. Assurez-vous que la tension électrique sur le port de configuration soit moins de 5 volt DC.**

Debug and configuration information is available if a connection is made via the debug port on the main board. USB to 4-pin serial cable must be used for this interface.

#### Technical Support and Contact Information

SignalFire Telemetry  
43 Broad St C-300  
Hudson, MA 01752  
(978) 212-2868  
[support@signal-fire.com](mailto:support@signal-fire.com)

#### Revision History

Revision	Date	Changes/Updates
1.0	5/17/17	Initial release
1.1	1/3/18	Updates for latest hardware revision
1.2	1/13/18	Updated for Tilt Scout Name. Added Pump Jack Mode
1.3	2/1/18	Updated mounting requirements, updated certification details
1.4	3/14/18	Added certification details

Changes or modifications not expressly approved by SignalFire Telemetry, Inc could void the user's authority to operate the equipment.

This device complies with Part 15 of the FCC Rules. Operation is subject to the following two conditions: (1) this device may not cause harmful interference, and (2) this device must accept any interference received, including interference that may cause undesired operation.

This equipment has been tested and found to comply with the limits for a Class B digital device, pursuant to Part 15 of the FCC Rules. These limits are designed to provide reasonable protection against harmful interference in a residential installation. This equipment generates, uses and can radiate radio frequency energy and, if not installed and used in accordance with the instructions, may cause harmful interference to radio communications. However, there is no guarantee that interference will not occur in a particular installation. If this equipment does cause harmful interference to radio or television reception, which can be determined by turning the equipment off and on, the user is encouraged to try to correct the interference by one of the following measures:

- Reorient or relocate the receiving antenna.
- Increase the separation between the equipment and receiver.
- Connect the equipment into an outlet on a circuit different from that to which the receiver is connected.
- Consult the dealer or an experienced radio/TV technician for help.

This device has been designed to operate with the permanently soldered antenna. No other antenna may be used.

To comply with FCC's and IC's RF radiation exposure requirements, the antenna(s) used for this transmitter must be installed such that a minimum separation distance of 20cm is maintained between the radiator (antenna) & user's/nearby person's body at all times and must not be co-located or operating in conjunction with any other antenna or transmitter.

This device complies with Industry Canada's license-exempt RSSs. Operation is subject to the following two conditions:(1) This device may not cause interference; and (2) This device must accept any interference, including interference that may cause undesired operation of the device.

Le présent appareil est conforme aux CNR d'Industrie Canada applicables aux appareils radio exempts de licence. L'exploitation est autorisée aux deux conditions suivantes : (1) l'appareil ne doit pas produire de brouillage, et (2) l'appareil doit accepter tout brouillage radioélectrique subi, même si le brouillage est susceptible d'en compromettre le fonctionnement.