

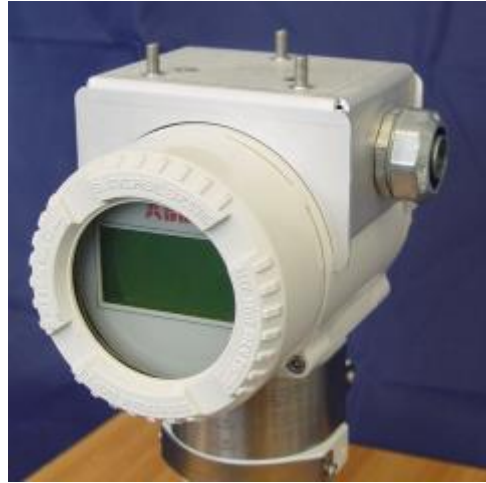
Rosemont 5300 Bracket Assembly

Step 1 – Attach Lower Bracket to Sensor

NPT Plug and 2
Large Flat Washers

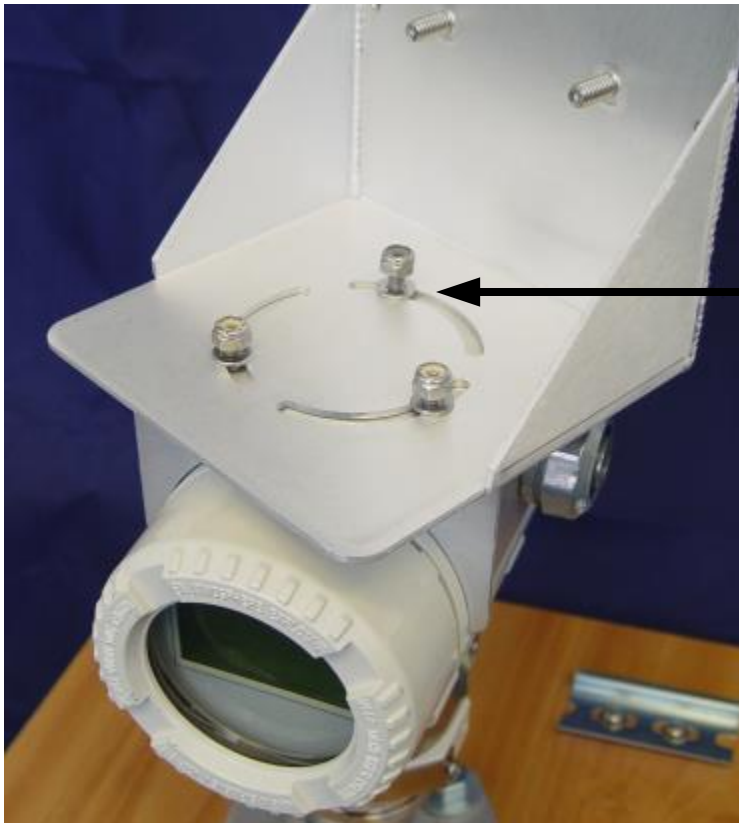


Watertight
Conduit Fitting



Note – Use Teflon tape on the threads on both fittings.

Step 2 – Attach “Z” Bracket to Lower Bracket



3 #8 Nuts and Flat Washers
Align so the solar panel faces
south (into the sun).

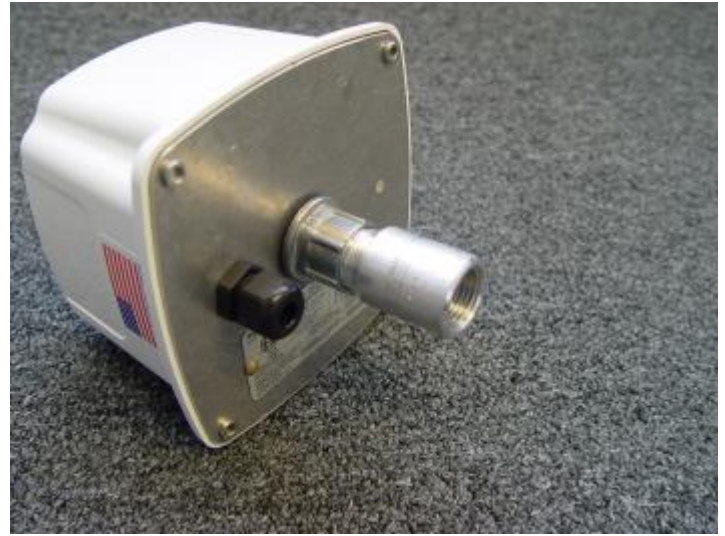
Solar panel will be attached
to the 14" studs on the “Z”
bracket (you can see 2 of
these in the photo to the
left)

Step 3 – Attach Sentinel to “Z” Bracket

These are the parts you will need (one of the conduit fittings has already been used on the bottom)



Prepare Sentinel by attaching pipe nipple and female union

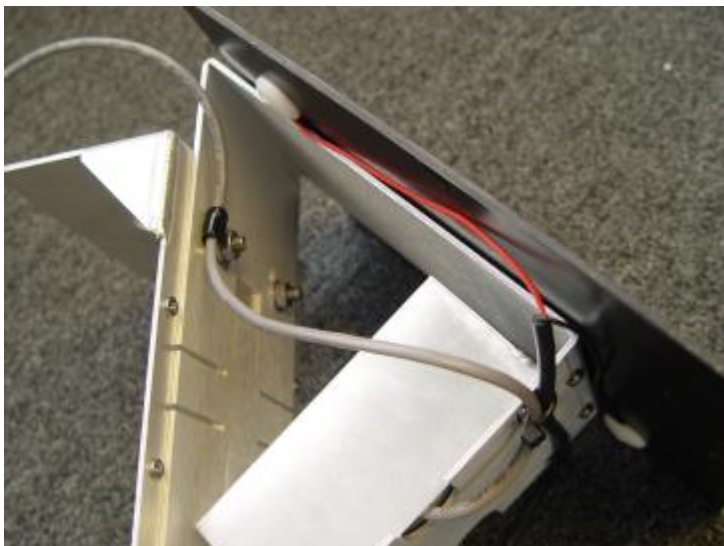


Attach Sentinel To “Z” Bracket using second conduit fitting

Run conduit between upper fitting (shown here) and the lower fitting on the sensor.

Wire the HART lines from the Sentinel to the Sensor through the conduit (2 wires – not supplied)

Step 4 – Attach Solar Module to “Z” Bracket and Connect Solar Power to Sentinel



Attach the Sentinel Solar to the “Z” bracket. Use the 4 ¼” studs on the “Z” bracket and washer/nuts supplied

Run the solar output wire to the Sentinel (via the Sentinel’s liquid-tight gland)